



12th WOMEN'S EUROPEAN HANDBALL CHAMPIONSHIP

EHF EURO 2016



Cumulative Statistics

NED - Netherlands After 8 matches

Time outs: 20 Avg. Time outs: 2.5

No	Name	M	Total			All Goals / Shots								Punishments				Offence			Defence			TP
			P	Goals	Shots	%	7mP	7m%	6mC	Wing	BT	FB	FTO	9m	YC	RC	2M	2+2	AS	R7	TO/TF	ST	BS	
5	KRAMER Jessy	8	2	3	67	1/1	100			0/1			1/1			2		2		1 / 1			1	1:18:33
6	VAN DER HEIJDEN Laura	8	18	35	51	1/2	50	1/1	2/5	7/11	3/3		4/13	2	1		16	6	6 / 4	1		5	4:05:31	
7	BONT Debbie	8	18	28	64			1/1	14/22		1/3	2/2			1		1	1	2 / 6	3		2	5:01:15	
8	ABBINGH Lois	8	20	42	48	11/13	85	0/2	0/2	1/2	1/1		7/22		1		5	2	4 / 2			3	1:50:40	
9	VAN OLPHEN Sanne	8	8	13	62					3/3			5/10				4	2	1 / 4				1:02:43	
10	SNELDER Danick	8	15	23	65			8/13	0/1	1/1	0/2	6/6		4	8		5	5	1 / 5		7	6	4:40:08	
11	KNIPPENBORG Lynn	7	3	8	38				0/4		2/3	1/1		1			1						1:12:37	
13	BROCH Yvette	8	23	28	82			13/17			8/9	2/2		2	3		4	4	3 / 6	1	6	1	4:36:45	
15	VISSER Maura	8	16	27	59	9/11	82		1/4	3/3	1/1		2/8	2	1	4	6		7 / 4		3	7	3:28:26	
17	GROOT Cornelia	8	35	53	66			1/1		12/13	5/8	3/4	14/27	3	3		36	8	12 / 6	6	3	2	6:48:35	
18	DULFER Kelly	8	4	5	80						2/3	2/2		3	1	2	5		/ 3	1	8	3	3:06:25	
21	GOOS Michelle	8	13	22	59				8/13		5/7	0/2				1	1		2 / 2	1		2	3:51:02	
23	JANKOVIC Jasmina	8																					21:34	
26	MALESTEIN Angela	8	12	21	57				4/10	1/1	6/9	1/1		1			3	2	1 / 2	2			2:29:52	
33	WESTER Tess	8	1	1	100						1/1						6		1				7:08:24	
79	POLMAN Estavana	8	39	68	57	2/3	67		5/9	7/9	5/9		20/38				21		11 / 4	1			4:57:30	
Team																								
Totals			227	377	60	24/30	80	24/35	34/70	35/44	40/59	17/20	53/119	18	2	26	0	116	30	52 / 49	16	27	32	8:00:00

No	Name	M	Total			All Saves / Shots										
			P	Saves	Shots	%	7mP	7m%	6mC	Wing	BT	FB	FTO	9m	9m%	NS
23	JANKOVIC Jasmina	8	3	18	17	2/7	29		0/1	0/3	0/1	0/1	1/5	20	0/4	0
33	WESTER Tess	8	95	281	34	5/24	21	7/31	14/39	13/39	3/24	1/2	52/122	43	34/109	31
Totals			98	299	33	7/31	23	7/31	14/40	13/42	3/25	1/3	53/127	42	34/113	30

Attacks

Team	All		Player Majority		Player Minority		Position Attacks		FB		Ind. FB		Team FB		TO	TO %
	G/Att.	%	G/Att.	%	G/Att.	%	G/Att.	%	G/Att.	%	G/Att.	%	G/Att.	%		
NED	227/446	51	24/46	52	17/38	45	170/357	48	40/69	58	9/10	90	31/59	53	101	23

Legend:	
%	Efficiency
AS	Assists
G/S	Goals/Shots
SF	Semifinal
YC	Yellow Cards
2M	2 Minute Suspensions
BS	Blocked Shots
MP	Matches Played
ST	Steals
6m	6-metre Shots
BT	Breakthroughs
NS	Near Shots
TO/TF	Turnovers/Technical Faults
7m	7-metre Shots
FB	Fast Breaks
RC	Red Cards
TP	Time Played
9m	9-metre Shots
FTO	Fast Throw off
S/S	Saves/Shots
Wing	Wing Shots



Cumulative Statistics

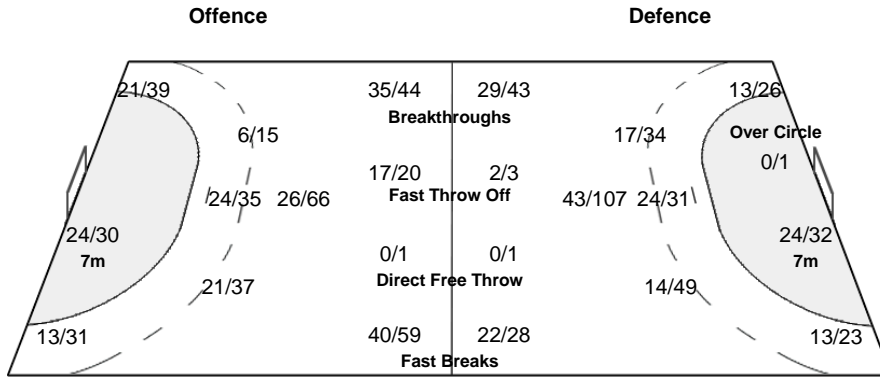
NED - Netherlands
After 8 matches

OverView of Shot Distribution

Team
Goals / Shots

27/37	14/22	32/43
20/43	3/11	20/37
51/57	18/26	42/52

17-Missed 20-Post 12-Blocked



Goalkeepers
Saves / Shots

12/46	6/13	5/29
20/40	5/10	16/33
15/59	7/12	12/57

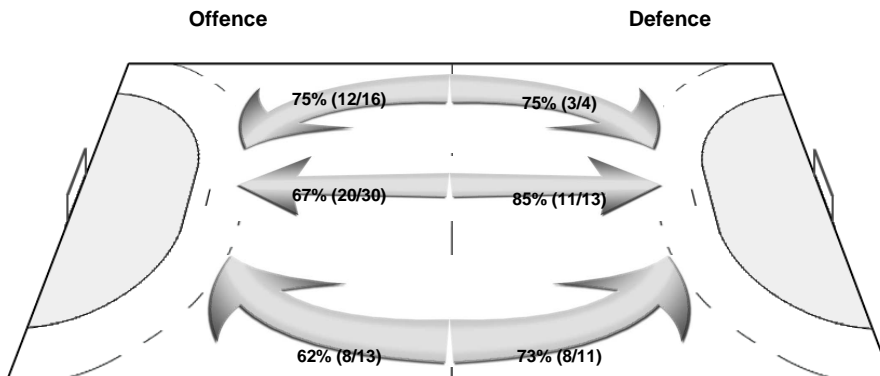
23 JANKOVIC J

0/2		0/2
1/2	0/2	0/3
0/4	1/1	1/2

33 WESTER T

12/44	6/13	5/27
19/38	5/8	16/30
15/55	6/11	11/55

Shot Distribution Fast Breaks

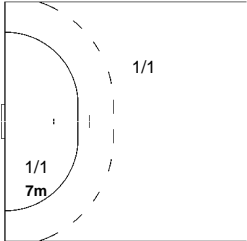


Cumulative Statistics

NED - Netherlands After 8 matches

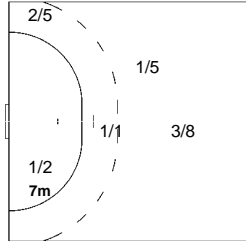
Players Shot Distribution Goals / Shots

5 KRAMER Jessy



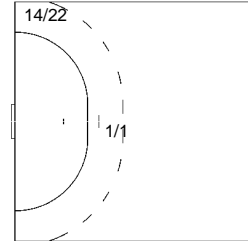
1/1		
		1/1
1-Missed		0/1 Breakthroughs

6 VAN DER HEIJDEN Laura



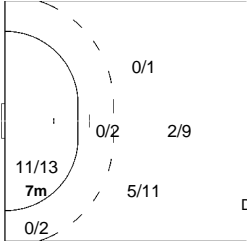
1/1		2/4
1/4	0/1	2/2
5/7	1/1	6/7
2-Missed	3-Post	3-Blocked
3/3 Fast Breaks		7/11 Breakthroughs

7 BONT Debbie



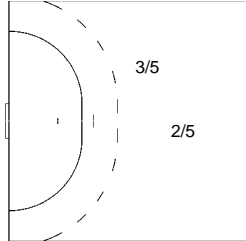
6/6	3/3	0/2
2/3		2/3
3/4		2/3
3-Missed	1-Post	
1/3 Fast Breaks		

8 ABBINGH Lois



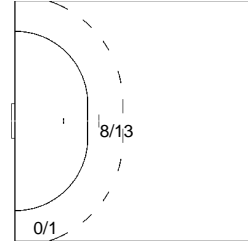
2/4	1/2	0/1
0/4	0/2	1/6
6/6	2/2	8/9
2-Missed	3-Post	1-Blocked
1/1 Fast Breaks		1/2 Breakthroughs
0/1 Direct Free Throw		

9 VAN OLPHEN Sanne



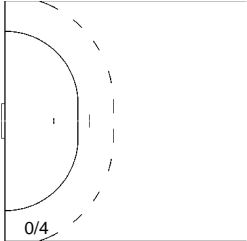
2/2	0/1	1/1
2/3		2/3
		1/1
1-Post		1-Blocked
		3/3 Breakthroughs

10 SNELDER Danick



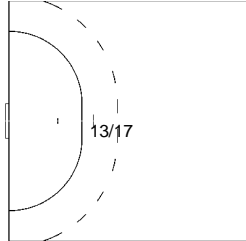
	3/3	1/1
0/2	0/1	1/2
5/5	3/6	2/3
0/2 Fast Breaks		1/1 Breakthroughs

11 KNIPPENBORG Lynn



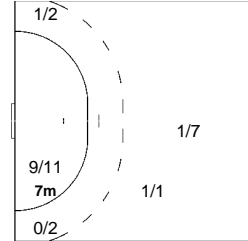
1/3		
1/1		1/2
2-Missed		
2/3 Fast Breaks		

13 BROCH Yvette



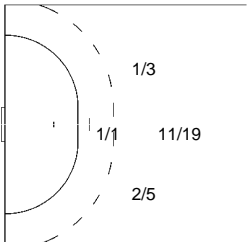
3/5	1/1	3/4
3/3		1/3
7/7	1/1	4/4
8/9 Fast Breaks		

15 VISSER Maura



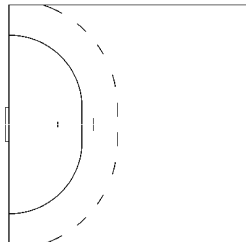
2/2	1/2	7/9
1/3		1/2
3/3		1/2
1-Missed	1-Post	2-Blocked
1/1 Fast Breaks		3/3 Breakthroughs

17 GROOT Cornelia



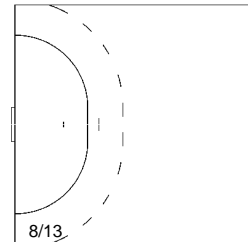
6/8	1/1	7/8
4/5	1/2	3/6
4/4	5/7	4/4
3-Missed	4-Post	1-Blocked
5/8 Fast Breaks		12/13 Breakthroughs

18 DULFER Kelly



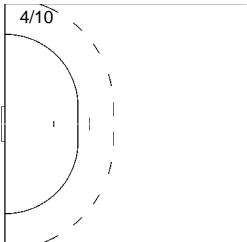
1/1		1/1
		1/1
		1/1
1-Post		
2/3 Fast Breaks		

21 GOOS Michelle



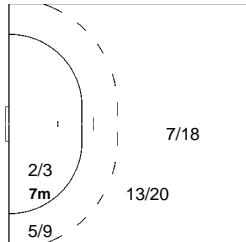
1/2	1/2	
1/4	0/1	1/1
7/7		2/2
1-Missed	2-Post	
5/7 Fast Breaks		

26 MALESTEIN Angela



1/2	2/4	2/3
1/2		1/1
1/1	2/2	2/3
1-Missed	2-Post	
6/9 Fast Breaks		1/1 Breakthroughs

79 POLMAN Estavana



1/3	1/3	8/9
4/7	1/3	4/7
9/12	4/7	7/10
1-Missed	2-Post	4-Blocked
5/9 Fast Breaks		7/9 Breakthroughs